

YOUR PARTNER IN MOTION ANALYSIS

TrackEye Version 5.0

Updated: January 30th, 2008

MAJOR NEW FEATURES in version 5.0

This document describes the major new features in the TrackEye 5.0 release.

Tracking

- Tracking algorithms are modified to operate with 16 bit image data. So far this is true for the correlation tracker, the symmetry trackers (quad, circle) & the intersection tracker.
- Tracking algorithms are modified to operate also with colour data. So far this is true for the correlation tracker. The point setup window always shows the image that is tracked.
- Tracking algorithms. If the image in the tracking is enhanced, tracking algorithms now work on the enhanced image. The point setup window always shows the image that is tracked.
- Find different image: Tool to find the frame containing the event of interest out of many frames in a long image sequence. Saves the operators precious time finding the 'interesting' frame
- It is now possible to set t0 individually directly from any tracking window. Diagrams, time panel will update instantly
- Quad tracker now automatically generates an angle sequence that shows the rotation angle of the quad marker
- Point Generator. Automatically finds new appearing points according to a tracking setup template defined by the operator

Analysis

- A function that adds or subtracts a constant to any sequence in TrackEye. 'Add a Constant'.

Presentation

- General 3D-diagrams. Enables a plot with three axes of 3D data. It possible to rotate (change view) and scale the diagram using mouse controls

Session

- The possibility to rename session icons to make them easier to identify. Current icon name will be shown in tooltip and on status bar
- "Camera Correction" node is renamed to "Offset Angles" and has a modified icon.
- "Position Calculation" node is renamed to "3D Position" and has a modified icon.
- The "Load Image" icon setup is improved

Image Export

- New functionality; title slate and overlays (text and image boxes) can be added to the exported image file. Customized Image export. The user can set the image range, format, compression and add text information as overlays on the exported image sequence. Several Image Export Settings can be stored for later use. This makes it easy to perform a number of different image exports on regular basis

6DoF (option)

- 6DoF back projections will use Camera Calibration/6DoF icon name. This makes it much easier to identify back projections appearing in the tracking window tracking list
- Select and enable point to track from back projection via a right-click of the mouse. If the back projections shows a point that is not tracked, they point name shown and it can be added to the tracking list via the right click menu.
- Improved tools for manual operation of back projection (rotating an object in 6DoF). The rotation, moving and scaling tools are considerably improved

Lens Calibration (TrackEye)

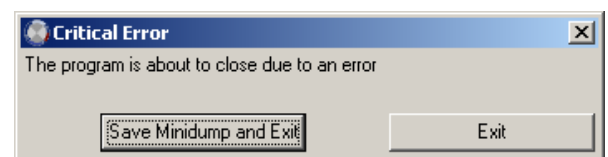
- Optimized for the typical calibration board with a majority of the markers in the plane of the board itself. Markers on the board are algorithmically treated separately from those that have a 3D distance from the board

Lens Calibration AICON (option)

- For ease of use, the AICON software module is now executable from the TrackEye application.
- AICON software is also now seamlessly integrated with the TrackEye installation procedure

Improved features bug reporting

From and including this TrackEye version, the possibilities to analyze severe program crashes has been improved significantly. From v5.0, when such an error occurs, this window will open with two options:



- **Save Minidump and Exit.**
This will create a small file (roughly 50KBytes) with software status (no user data!) at time of problems. This file will have a unique name including TrackEye version and date/time stamp, typically `trackeye_5.0.1836.0_2007_12_17_08_23_16.dmp`, and will be found in the “Minidump” sub directory of the software installation. If you accept, you can attach this file to an email to support@imagesystems.se in order for us to analyze it. We appreciate if you send us all ‘minidumps’ you have, whether or not having a service contract.
- **Exit**
This option will just close TrackEye.

